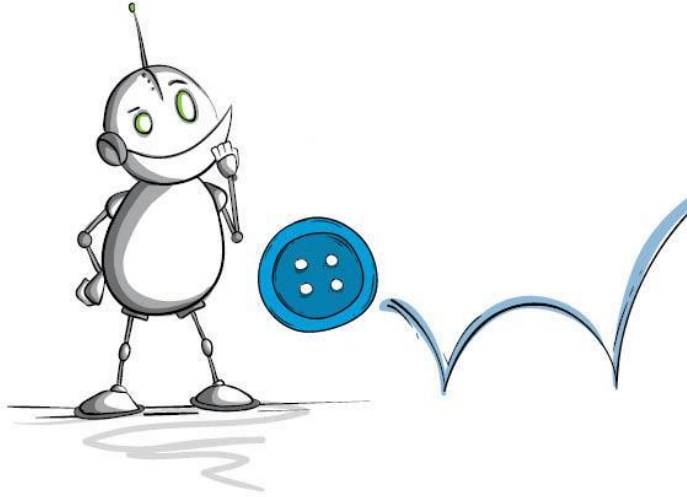


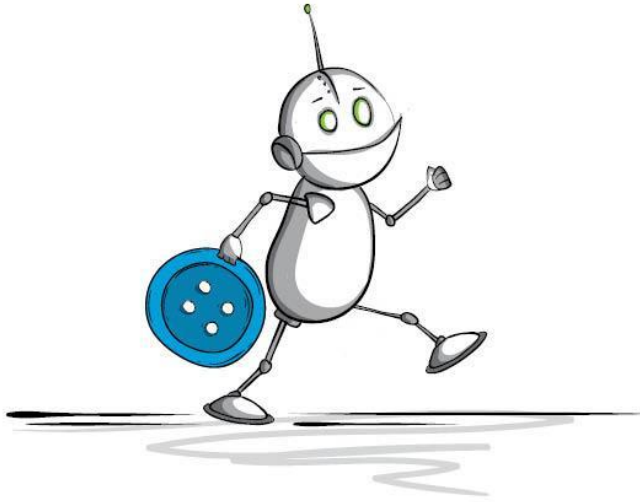


**Whose
button
is this?**

James Woolley Paul Kennedy Louise Gale



Tinny Tim was sitting on the road when a button bounced his way.



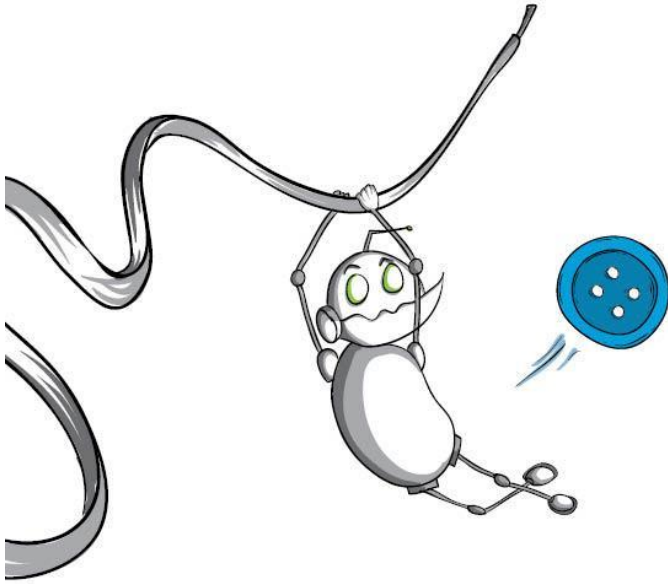
"I wonder where this comes from," he said.
He wanted to find out.



It was busy on the side of the road.

“Woah!”

He nearly got squashed.



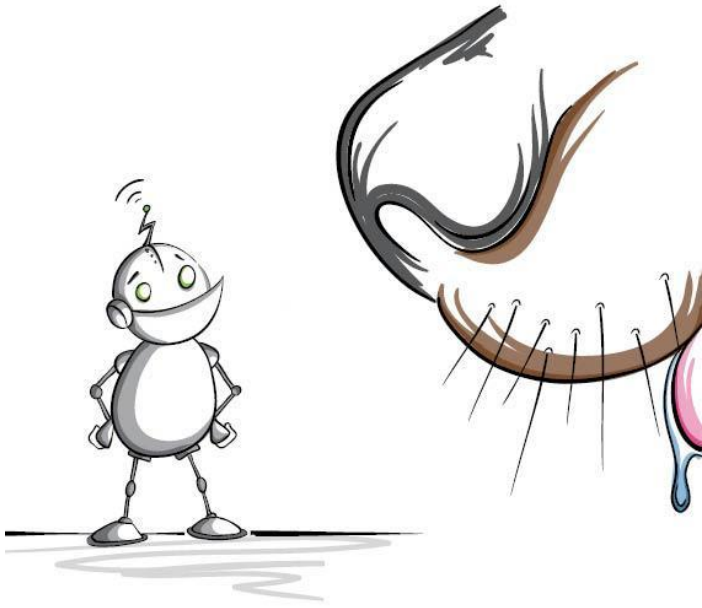
He made a lucky escape.
"It's scary out here," he said.



“Hey there, is this yours?”



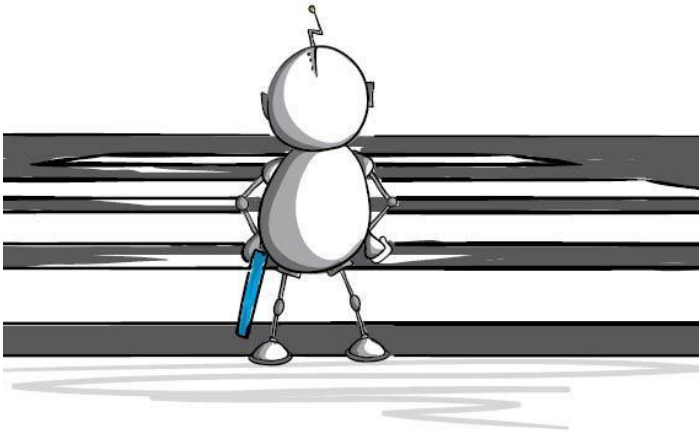
The green man said nothing. He just turned red.
"What a rude person."



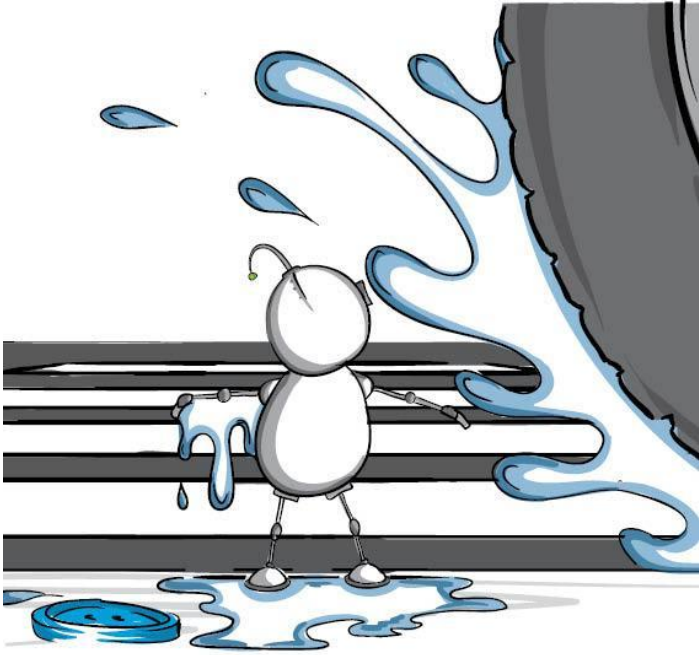
Tinny Tim carried on looking.
"Whose button is this?"



“Woah..!
...at least he’s friendly.”



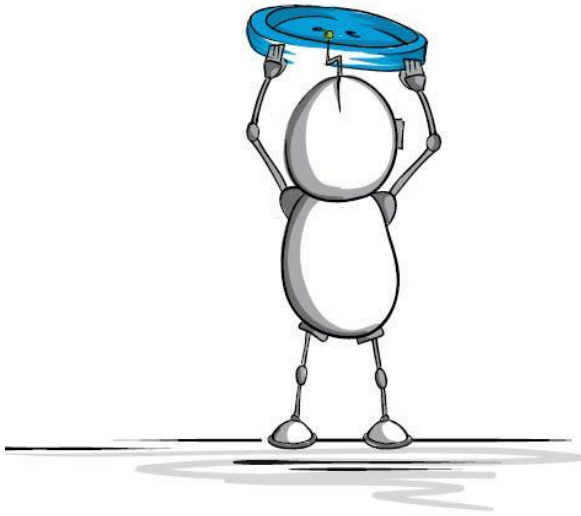
"I've got to get to the other side.
I'm sure that's where this comes from."



SPLASH!

"That was close."

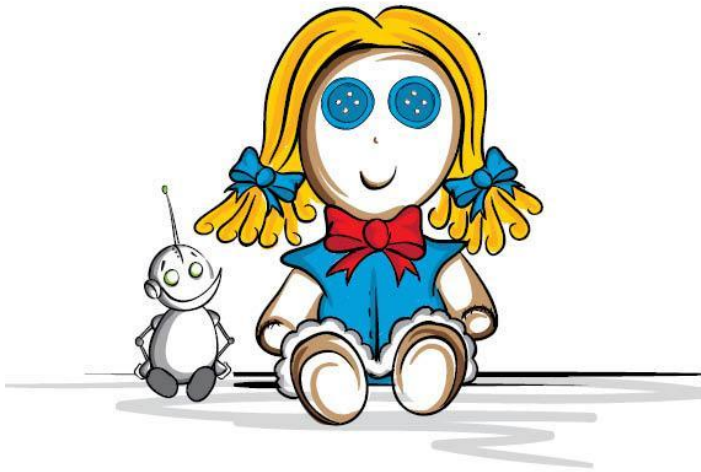
He waited for the cars to pass before he carried on.



Maybe this was who he was looking for.
"Hello, who are you?"



"I'm Ruby Rags." "I think this is yours," he said.



“Thank you, little robot. Can we be friends?”



Whose button is this?

Created by Paul Kennedy, James Woolley, Louise
Gale

This work is licensed under a Creative Commons Attribution 4.0 International License . This means you are free to share (copy and redistribute the material in any medium or format) and adapt it (remix, transform, and build upon the material) for any purpose, even commercially, as long as you give appropriate credit, with a link to your source, and indicate if changes were made. You may do so in any reasonable manner, but not in any way that suggests the licensor endorses you or your use.

